

## A Gallery of Photographs by the Dunshee Family: Nineteenth-Century Commercial Photographers



This gallery contains a sample of images from a number of Dunshee studios, and supplements Gary D. Saretzky's article: "The Dunshees: Itinerant New England Photographers from Bristol, Vermont." Saretzky's in-depth article will be found in *The New England Journal of Photographic History*, Issue 174, 2016, published by the Photographic Historical Society of New England (PHSNE.org) and available in print or electronic formats at [www.magcloud.com/browse/magazine/876415](http://www.magcloud.com/browse/magazine/876415)

The Dunshees were prolific photographers whose work resides in a number of private and public collections. The Boston Athenaeum alone has more than a hundred examples from just their Boston studios. For a description of the Athenaeum's holdings, see:

Cartes de visite at [cdm.bostonathenaeum.org/cdm/singleitem/collection/p15482coll1/id/857/rec/1](http://cdm.bostonathenaeum.org/cdm/singleitem/collection/p15482coll1/id/857/rec/1)

Cabinet prints at [cdm.bostonathenaeum.org/cdm/singleitem/collection/p15482coll1/d/856/rec/2](http://cdm.bostonathenaeum.org/cdm/singleitem/collection/p15482coll1/d/856/rec/2)

Cased image at [cdm.bostonathenaeum.org/cdm/singleitem/collection/p16057coll33/id/101/rec/4](http://cdm.bostonathenaeum.org/cdm/singleitem/collection/p16057coll33/id/101/rec/4)

© 2016 The Photographic Historical Society of New England, Inc. All Rights Reserved.



Figure 1. Dunshee & Burnham (Edward S. & Thomas Rice), Boston, Massachusetts. Active ca. 1872 to 1873. An albumen print entitled "Ruins of Trinity Church, Old South Church, new post office," from the studio of Dunshee & Burnham, 323 Washington Street, Boston, Massachusetts. This 21 x 17 ½-inch view was made after the great Boston fire of November 1872.

It shows the ruins of Trinity Church in the foreground, the Old South Church steeple in the distance, and the new post office building on the far right. Trinity Church stood on Summer Street; Old South Church, now called the Old South Meeting House, still stands on the corner of Milk and Washington streets. *Collection of the Boston Public Library.*

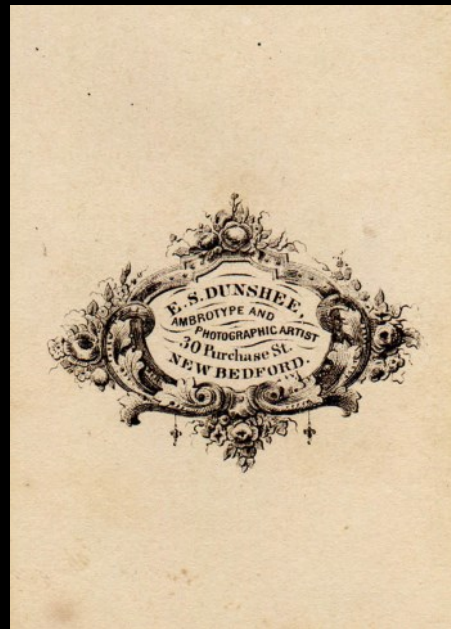


Figure 2. Edward S. Dunshee, New Bedford, Massachusetts. Active 1856-1864. Face and verso of a hand-tinted carte de visite from the studio of E. S. Dunshee "Ambrotype & Photographic Artist," 30 Purchase Street, New Bedford, Massachusetts. In ink, "Stella P. Matthews." *Collection of Gary D. Saretzky.*

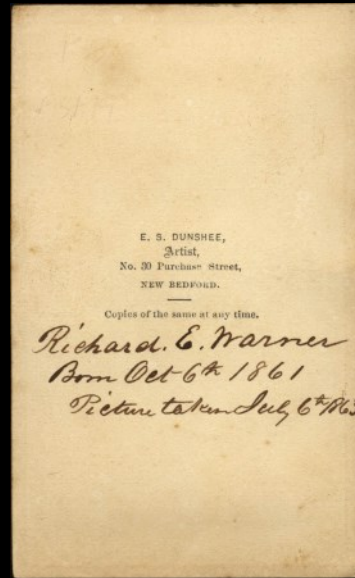


Figure 3. Edward S. Dunshee, New Bedford, Massachusetts. Active 1856-1864. Face and verso of a carte de visite from the studio of E. S. Dunshee "Artist," 30 Purchase Street, New Bedford, Massachusetts. In ink, "Richard E. Warner. Born Oct 6<sup>th</sup> 1861. Picture taken July 6<sup>th</sup> 1863." *Collection of Gary D. Saretzky.*



Figure 4. Edward S. Dunshee, New Bedford, Massachusetts. Active 1856-1864. Carte de visite from the studio of E. S. Dunshee "Ambrotype & Photographic Artist," 30 Purchase Street, New Bedford, Massachusetts. *Collection of Ron Polito.*

Figure 5. Edward S. Dunshee, New Bedford, Massachusetts. Active 1856-1864. Carte de visite from the studio of E. S. Dunshee "Artist," 30 Purchase Street, New Bedford, Massachusetts. On verso, in pencil, "Abbie Macomber." *Collection of Ron Polito.*

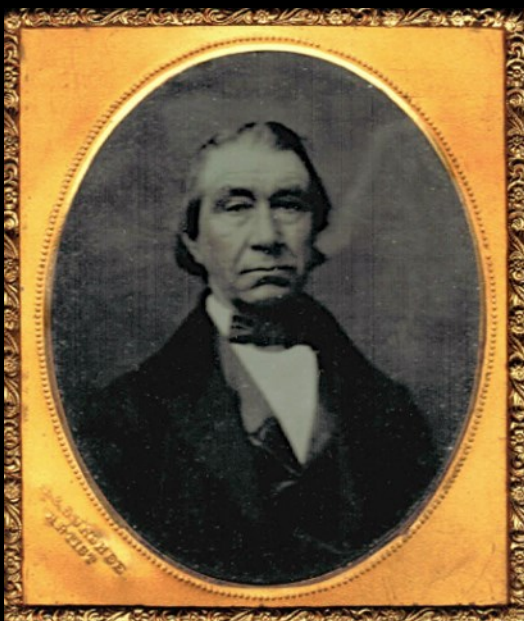


Figure 6. Likely Edward S. Dunshee, New Bedford, Massachusetts. Active 1856-1864. A sixth-plate ambrotype; the copper mat is stamped in the lower-left corner "E. S. Dunshee, Artist." *Collection of Richard Willinger.*

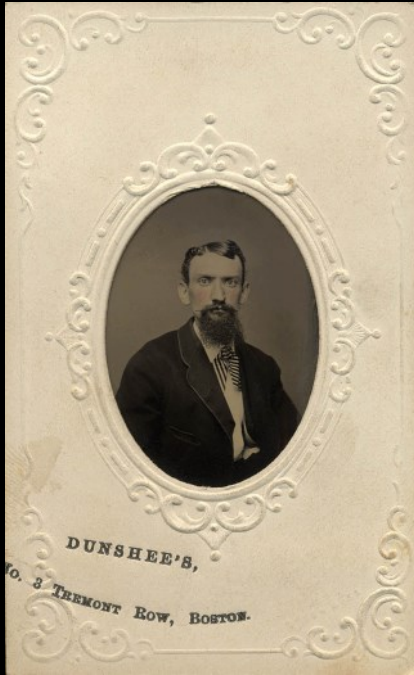


Figure 7. Edward S. Dunshee, Boston, Massachusetts. Active 1868-1878. Carte de visite-size matted tintype from Dunshee's studio, 3 Tremont Row, Boston, Massachusetts. *Collection of Gary D. Saretzky.*



Figure 8. Edward S. Dunshee, Boston, Massachusetts. Active 1868-1878. Carte de visite, dated 1877, from the studio of E. S. Dunshee, 58 Temple Place, Boston, Massachusetts. *Collection of Gary D. Saretzky.*



Figure 9. Edward S. Dunshee, Boston, Massachusetts. Active 1868-1878. Carte de visite, dated 1882, from the studio of E. S. Dunshee, 3 Tremont Row, Boston, Massachusetts. Edward S. Dunshee left Boston for Philadelphia around 1878; the Boston studio, still bearing his name, was being operated by Fred Fargo Dunshee and others. *Collection of Ron Polito.*

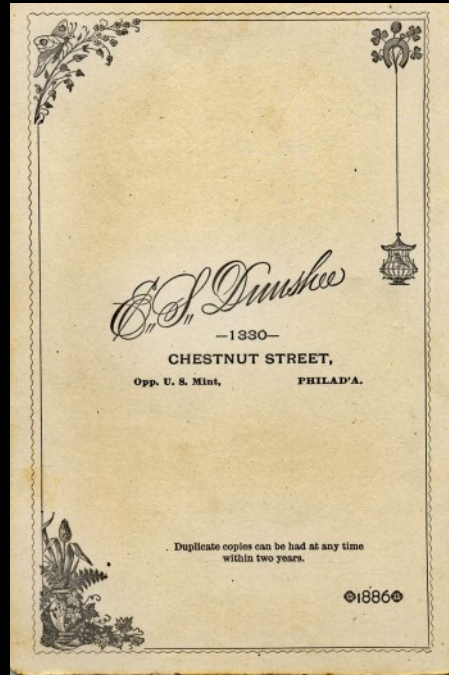


Figure 10. Edward S. Dunshee, Philadelphia, Pennsylvania. Active 1878-1895 & 1904. Face and verso of a cabinet print, dated 1886, from the Dunshee studio, 1330 Chestnut Street, Philadelphia, Pennsylvania. *Collection of Gary D. Saretzky.*



Figure 11. Edward S. Dunshee, Philadelphia, Pennsylvania. Active 1878-1895 & 1904. Cabinet print from the Dunshee studio, 1330 Chestnut Street, Philadelphia, Pennsylvania. *Collection of Gary D. Saretzky.*



Figure 12. Edward S. Dunshee, Philadelphia, Pennsylvania. Active 1878-1895 & 1904. Cabinet print from the Dunshee studio, 1330 Chestnut Street, Philadelphia, Pennsylvania. *Collection of Gary D. Saretzky.*



Figure 13. Edward S. Dunshee, Philadelphia, Pennsylvania. Active 1878-1895 & 1904. Cabinet print from the Dunshee studio, 1330 Chestnut Street, Philadelphia, Pennsylvania. *Collection of Ron Polito.*



Figure 14. Edward S. Dunshee, Philadelphia, Pennsylvania. Active 1878-1895 & 1904. Cabinet print from the Dunshee studio, 1330 Chestnut Street, Philadelphia, Pennsylvania. *Collection of Gary D. Saretzky.*



Figure 15. Edward S. Dunshee, Trenton, New Jersey. Active 1894-1901. Cabinet print from the Dunshee studio, 209 East State Street, Trenton, New Jersey. *Collection of Gary D. Saretzky.*



Figure 16. Edward S. Dunshee, Trenton, New Jersey. Active 1894-1901. Cabinet print from the Dunshee studio, 209 East State Street, Trenton, New Jersey. *Collection of Richard Willinger.*



Figure 17. Edward S. Dunshee, Trenton, New Jersey. Active 1894-1901. Cabinet print from the Dunshee studio, 209 East State Street, Trenton, New Jersey. *Collection of Richard Willinger.*



Figure 18. Edward S. Dunshee, Trenton, New Jersey. Active 1894-1901. Cabinet print from the Dunshee studio, 209 East State Street, Trenton, New Jersey. *Collection of Gary D. Saretzky.*





Figure 19. Edward S. Dunshee, Trenton, New Jersey. Active 1894-1901. Cabinet print from the Dunshee studio, 209 East State Street, Trenton, New Jersey. *Collection of Richard Willinger.*

Figure 20. Edward S. Dunshee, Trenton, New Jersey. Active 1894-1901. Cabinet print from the Dunshee studio, 209 East State Street, Trenton, New Jersey. *Collection of Richard Willinger.*



Figure 21. Edward S. Dunshee, Trenton, New Jersey. Active 1894-1901. Cabinet print from the Dunshee studio, 209 East State Street, Trenton, New Jersey. *Collection of Gary D. Saretzky.*



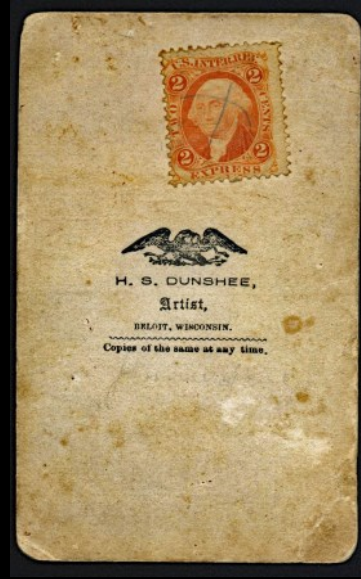


Figure 22. Horace S. Dunshee, Beloit, Wisconsin. Active ca. 1863-1864. Face and verso of a carte de visite from the studio of H. S. Dunshee, Beloit, Wisconsin, ca. 1864. On verso, a two-cent United States Internal Revenue Express stamp. *Collection of Gary D. Saretzky.*

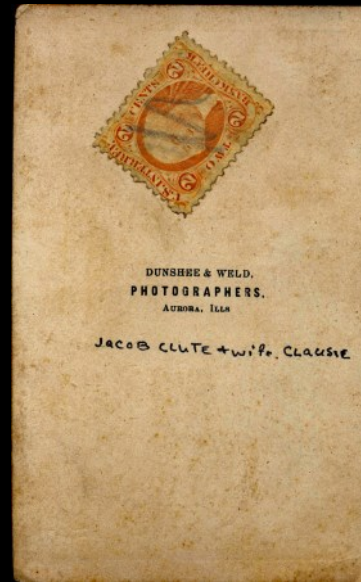


Figure 23. Dunshee & Weld, Aurora, Illinois. Active 1864-1865. Face and verso of a carte de visite from the studio of Dunshee and Weld (likely Horace S. Dunshee), Aurora, Illinois, ca. 1864 to 1865. On verso, a two-cent United States Internal Revenue Bank Check stamp, and in ink, "Jacob Clute & wife Clausie." *Collection of Gary D. Saretzky.*



Figure 25. Cornelius E. Dunshee, Providence, Rhode Island. Active 1861-1865. Carte de visite from the Dunshee studio, 175 Westminster Street, Providence, Rhode Island. *Collection of Gary D. Saretzky.*

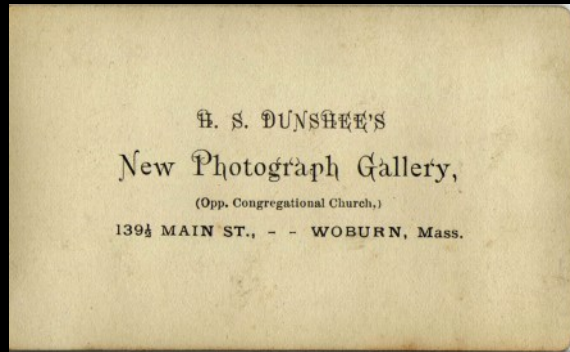


Figure 24. Horace S. Dunshee, Woburn, Massachusetts. Active 1877. Face and verso of a carte de visite from H. S. Dunshee's New Photograph Gallery, 139½ Main Street, Woburn, Massachusetts. *Collection of Ron Polito.*



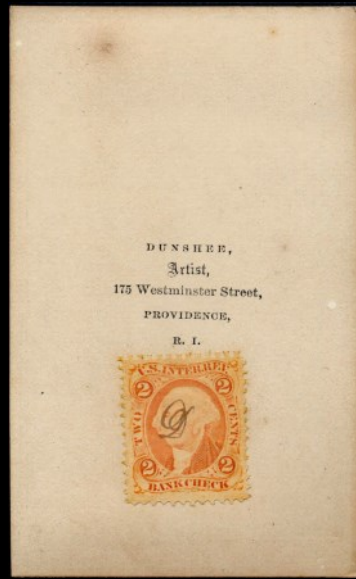


Figure 26. Cornelius E. Dunshee, Providence, Rhode Island. Active 1861-1865. Face and verso of a carte de visite from the Dunshee studio, 175 Westminster Street, Providence, Rhode Island. On verso, a two-cent United States Internal Revenue Bank Check stamp, ca. 1864. *Collection of Gary D. Saretzky.*

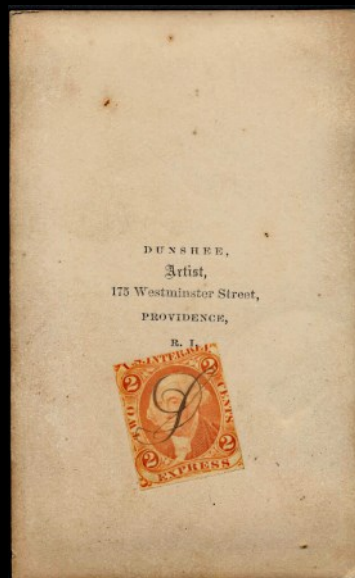


Figure 27. Cornelius E. Dunshee, Providence, Rhode Island. Active 1861-1865. Face and verso of a carte de visite from the Dunshee studio, 175 Westminster Street, Providence, Rhode Island. On verso, a two-cent United States Internal Revenue Express stamp, ca. 1864-1866. *Collection of Gary D. Saretzky.*

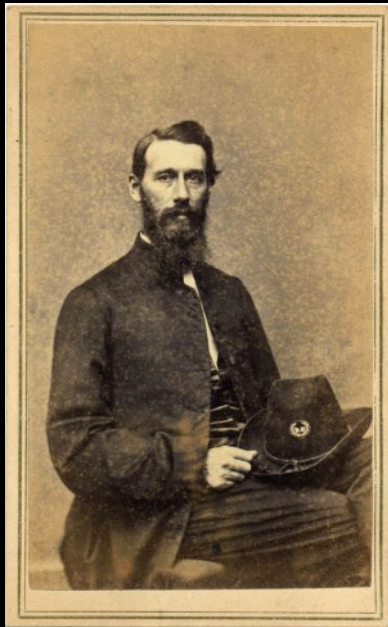


Figure 28. Cornelius E. Dunshee, Providence, Rhode Island. Active 1861-1865. Carte de visite from the Dunshee studio, 175 Westminster Street, Providence, Rhode Island. *Collection of Gary D. Saretzky.*

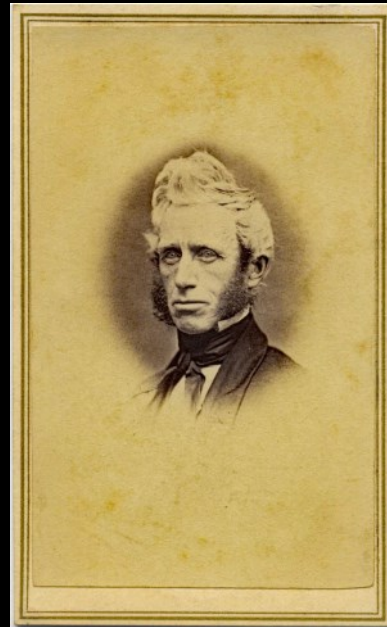


Figure 29. Cornelius E. Dunshee, Providence, Rhode Island. Active 1861-1865. Carte de visite from the Dunshee studio, 175 Westminster Street, Providence, Rhode Island. *Collection of Gary D. Saretzky.*



Figure 30. Cornelius E. Dunshee, Providence, Rhode Island. Active 1861-1865. Carte de visite from the Dunshee studio, 175 Westminster Street, Providence, Rhode Island. *Collection of Gary D. Saretzky.*



Figure 31. Cornelius E. Dunshee, Providence, Rhode Island. Active 1861-1865. Carte de visite from the Dunshee studio, 175 Westminster Street, Providence, Rhode Island. On verso, in pencil, "Miss Josephine Remington, Phenix, R. I." *Collection of Ron Polito.*

Figure 32. Cornelius E. Dunshee, Providence, Rhode Island. Active 1861-1865. Carte de visite from the Dunshee studio, 175 Westminster Street, Providence, Rhode Island. *Collection of Gary D. Saretzky.*



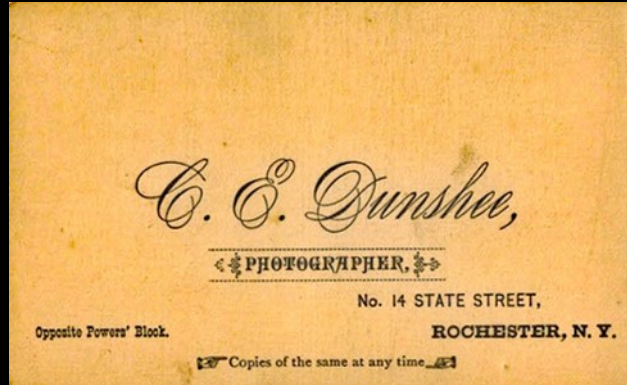


Figure 33. Cornelius E. Dunshee, Rochester, New York. Active 1865-1883 Face and verso of a carte de visite from the studio of C. E. Dunshee, 14 State Street, Rochester, New York. *Collection of Ron Polito.*

Figure 34. Dunshee & Company. A sixth-plate ruby ambrotype; mat is stamped "Dunshee & Co Artists" and "Cutting's Patent July 4 & 11 1854." Specific Dunshee and location unknown. *Collection of Gary D. Saretzky.*

